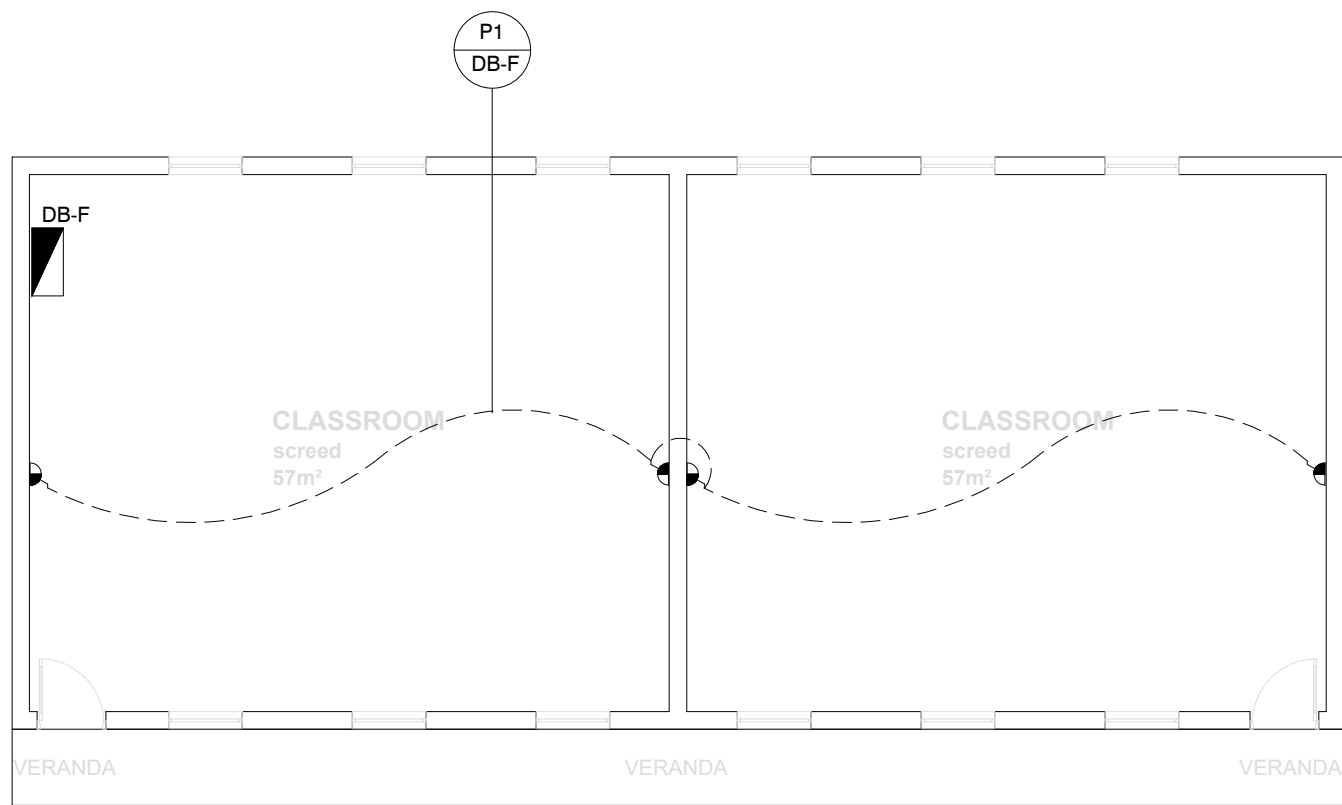
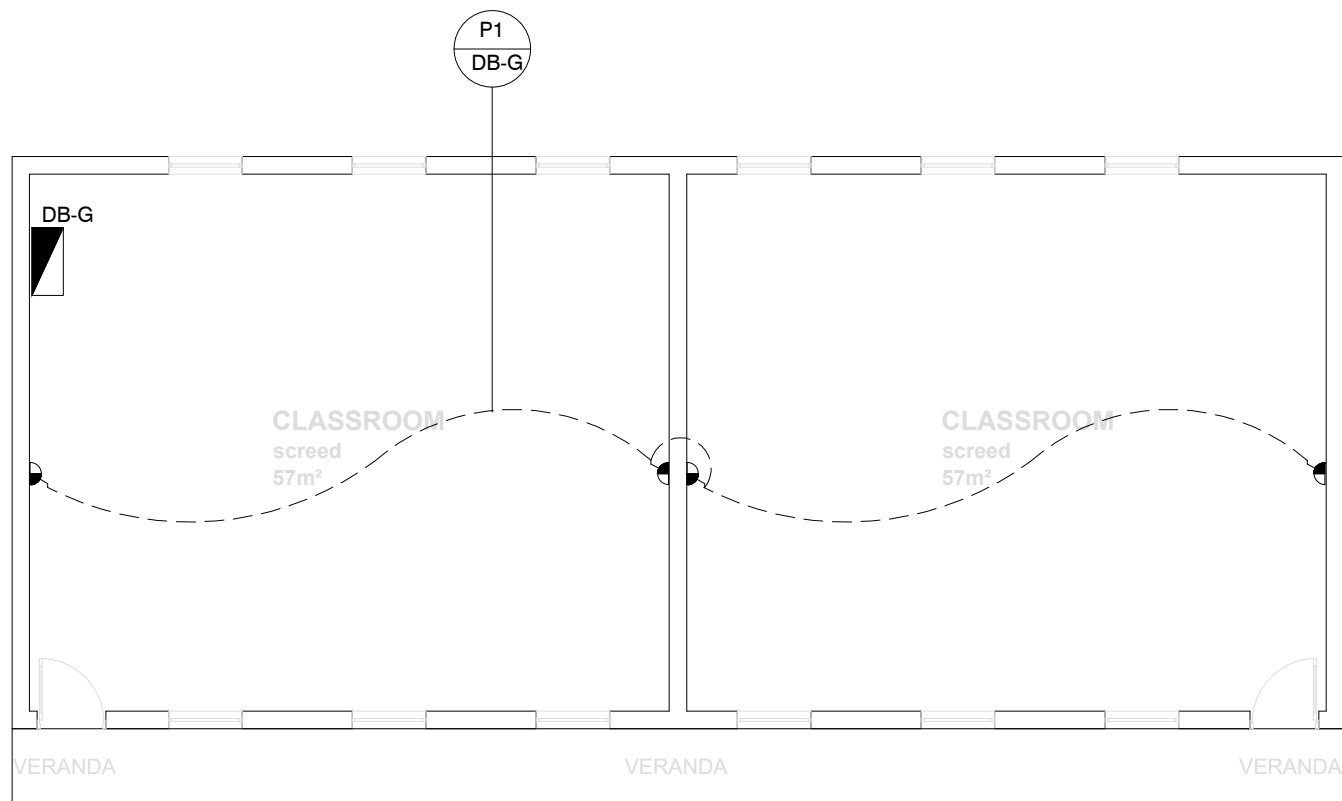


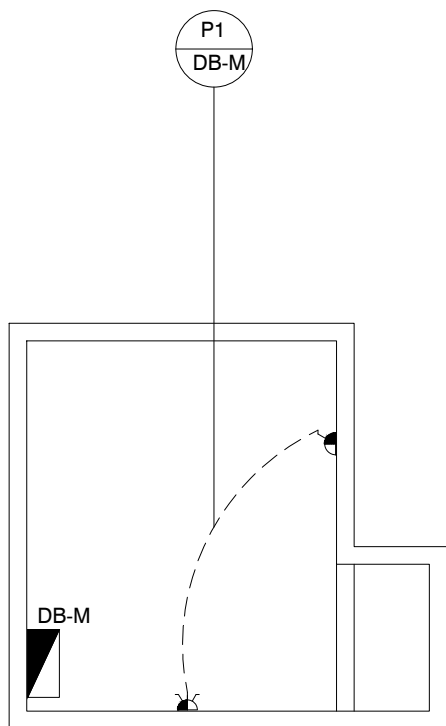
EXISTING CLASSROOMS - CL3
SCALE 1 : 100



EXISTING CLASSROOMS - CL2-1
SCALE 1 : 100

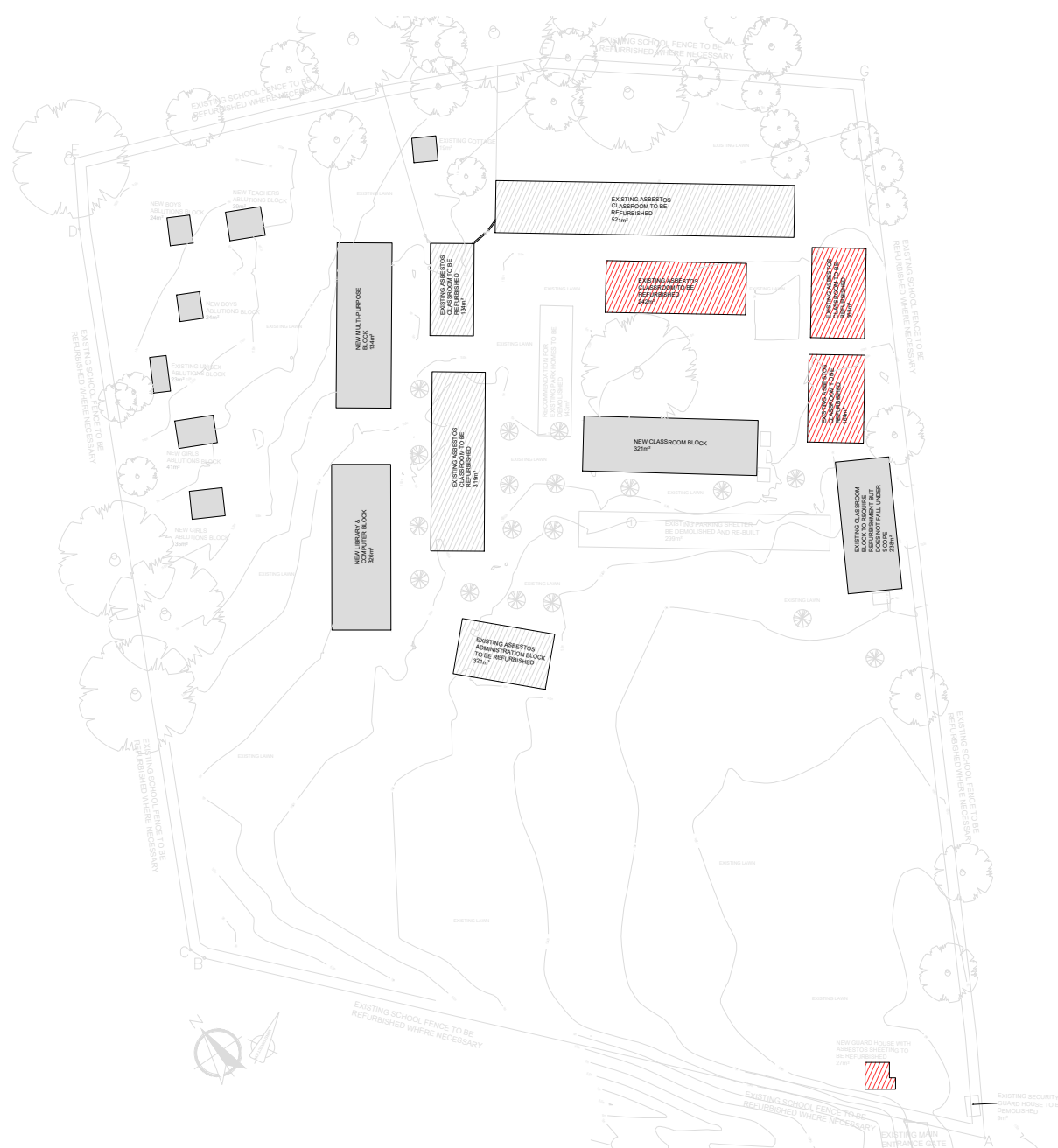


EXISTING CLASSROOMS - CL2-2
SCALE 1 : 100



GUARD HOUSE
SCALE 1 : 100

LEGEND:	
	NEW 16amp STANDARD SOCKET 3 PIN SWITCH SOCKET OUTLETS BEARING THE SABS MARK MOUNTED 300mm A.F.F.L. ON POWER SKIRTING. 16amp NORMAL SSO's TO BE WIRED WITH 2 x 4.0mm² (L+N) PVC WIRE 2.5mm²/BCWE. 20amp SP 5kg CB IN DISTRIBUTION BOARD FOR PROTECTION. 20amp SP 5kg CB IN DISTRIBUTION BOARD FOR PROTECTION.
	NEW 16amp STANDARD SOCKET 3 PIN SWITCH SOCKET OUTLETS BEARING THE SABS MARK MOUNTED 300mm A.F.F.L. ON WALL. 16amp NORMAL SSO's TO BE WIRED WITH 2 x 4.0mm² (L+N) PVC WIRE 2.5mm²/BCWE. 20amp SP 5kg CB IN DISTRIBUTION BOARD FOR PROTECTION. 20/25mm PVC CONDUIT IS TO BE INSTALLED TO ALL POINTS ON 100mm x 100mm STEEL DRAW BOX ON WALL. 20amp SP 5kg CB IN DISTRIBUTION BOARD FOR PROTECTION.
	NEW 16amp STANDARD 3 PIN DOUBLE SWITCH SOCKET OUTLETS BEARING THE SABS MARK MOUNTED ON WALL 300mm A.F.F.L. 16amp NORMAL DSSO's TO BE WIRED WITH 2 x 4.0mm² (L+N) PVC WIRE 2.5mm²/BCWE ON WALL. 20/25mm PVC CONDUIT IS TO BE INSTALLED TO ALL POINTS ON 100mm x 100mm STEEL DRAW BOX ON WALL. 20amp SP 5kg CB IN DISTRIBUTION BOARD FOR PROTECTION.
	NEW 16amp DEDICATED 3 PIN SWITCH SOCKET OUTLETS BEARING THE SABS MARK - ISOLATED EARTH PIN SHAVED AT 90° CHAMFERED EARTH. 1. 16amp 3 PIN SHAVED SSO's TO BE WIRED WITH 2 x 4.0mm² (L+N) PVC WIRE & 2.5mm² PVC GREEN INSULATED EARTH. MOUNTED ON A POWER SKIRTING. 2. NO EARTH LEAKAGE FOR THIS CIRCUIT. 3. 20amp SP 5kg CB IN DISTRIBUTION BOARD FOR PROTECTION
	NEW 16amp DEDICATED 3 PIN SWITCH SOCKET OUTLETS BEARING THE SABS MARK - ISOLATED EARTH PIN SHAVED AT 90° CHAMFERED EARTH. 1. 16amp 3 PIN SHAVED SSO's TO BE WIRED WITH 2 x 4.0mm² (L+N) PVC WIRE & 2.5mm² PVC GREEN INSULATED EARTH. MOUNTED ON WALL. 2. NO EARTH LEAKAGE FOR THIS CIRCUIT. 3. 20/25mm PVC CONDUIT IS TO BE INSTALLED TO ALL POINTS ON 100mm x 100mm STEEL DRAW BOX ON WALL. 20amp SP 5kg CB IN DISTRIBUTION BOARD FOR PROTECTION
	NEW 16amp STANDARD SOCKET 3 PIN, 1x 2 PIN SWITCH SOCKET OUTLETS BEARING THE SABS MARK MOUNTED ON WALL 300mm A.F.F.L. 16amp NORMAL SSO's TO BE WIRED WITH 2 x 4.0mm² (L+N) PVC WIRE 2.5mm²/BCWE. 20amp SP 5kg CB IN DISTRIBUTION BOARD FOR PROTECTION. 20amp SP 5kg CB IN DISTRIBUTION BOARD FOR PROTECTION.
	NEW 16amp STANDARD SOCKET 3 PIN, 1x 2 PIN SWITCH SOCKET OUTLETS BEARING THE SABS MARK MOUNTED ON WALL 300mm A.F.F.L. 16amp NORMAL SSO's TO BE WIRED WITH 2 x 4.0mm² (L+N) PVC WIRE 2.5mm²/BCWE. 20amp SP 5kg CB IN DISTRIBUTION BOARD FOR PROTECTION. 20/25mm PVC CONDUIT IS TO BE INSTALLED TO ALL POINTS ON 100mm x 100mm STEEL DRAW BOX ON WALL. 20amp SP 5kg CB IN DISTRIBUTION BOARD FOR PROTECTION.
	DATA POINT OUTLET
	TELEPHONE POINT OUTLET
	2 TIER COMPARTMENT PVC POWER SKIRTING
	3 POLE, RECESSED MOUNTED ISOLATOR RATRD IP65
	2 POLE, SURFACE MOUNTED ISOLATOR RATRD IP66
	1 POLE, RECESSED MOUNTED ISOLATOR RATRD IP65
	HEAVY DUTY GATE MOTOR
	DISTRIBUTION BOARD MOUNTED 2200mm A.F.F.L. TO TOP OF DISTRIBUTION BOARD
NOTES: 1. POWER SKIRTING MOUNTED AND ALL SOCKETS ON POWER SKIRTING MOUNTED 100mm ABOVE COUNTER TOP. 2. MOUNTED 300mm ABOVE COUNTER TOP.	



NOTES:

REFERENCE DRAWING

NO.	DRAWING NUMBER	DESCRIPTION
1	3007	DB-E AND DB-F SINGLE LINE DIAGRAM
2	3008	DB-G AND DB-M SINGLE LINE DIAGRAM
3	3009	RETICULATION LAYOUT

REVISION

NO.	DATE	REVISION	REV. BY
1	30/11/2022	ISSUED FOR TENDER	L. MKHIZE

LODEMANN HOLDINGS SIGNATURES

NO.	DATE	REVISION	REV. BY
1	30/11/2022	ISSUED FOR TENDER	L. MKHIZE

CLIENT DEPARTMENT SIGNATURES

FACILITY STAMP

FACILITY MANAGER

INFRASTRUCTURE MANAGER

GENERAL MANAGER

Checked by Professional Consultant

Name

Signature

Date

SIGPRO
ENGINEERING AND PROJECT MANAGEMENT



NORTHERN REGION

Project:

KZN DOE INFRASTRUCTURE DEVELOPMENT AND MAINTENANCE PROGRAMME

Drawing Description:

MATAMZANE DUBE SECONDARY SCHOOL EXISTING CLASSROOM CL3, CL2-1 AND CL2-2 POPWER LAYOUT PLAN

Drawn: SIGPRO

Date: 30/11/2022

Scale/s:

AS SHOWN (A1)

Consultant Drawing Number:

1013-023-3004

DBSA Drawing number

500124283

Stamped by Plans Approval Committee